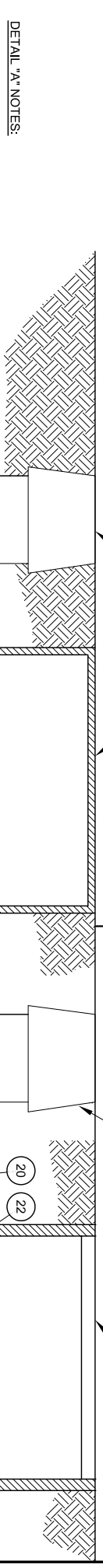
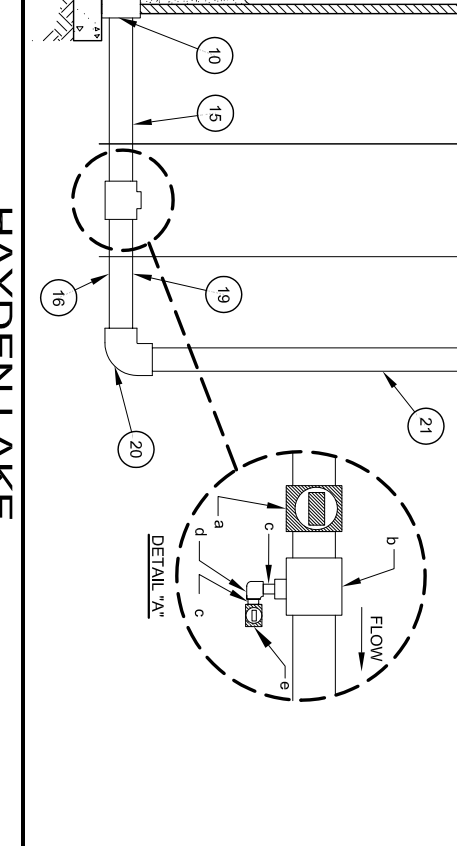
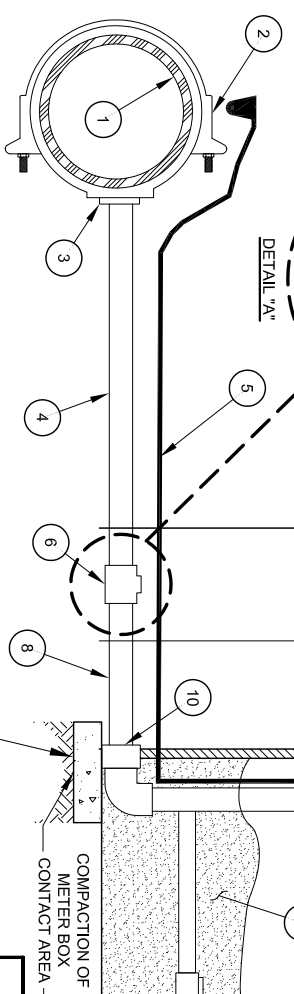
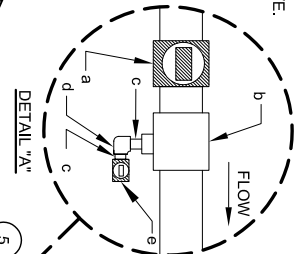


ITEM NO. AND DESCRIPTION	ITEM NO. AND DESCRIPTION	ITEM NO. AND DESCRIPTION
1 WATER MAIN.	9 1" MIN. MASONRY BLOCK	16 2" BALL CURB VALVE WITH DRAIN, SEE DETAIL "A".
2 MAIN SIZE" x 2" DOUBLE STRAP SADDLE TORQUED TO 30-40 ft. lbs.	10 2" BRASS UNIONS - IF NOT SUPPLIED WITH SETTER.	17 10" SD-35 PVC VALVE BOX.
3 LINE TAP: DRY TAP: 2" MIP x 2" POLYETHYLENE PACK JOINT FITTING WITH INTERIOR STIFFENER. WET TAP: 2" MIP CORPORATION STOP x 2" POLYETHYLENE PACK JOINT FITTING WITH INTERIOR STIFFENER.	11 2" FORD OR MACDONALD OR APPROVED EQUAL COPPER METER SETTER FOR 4" BURY WITH LOCKABLE ANGLE METER STOP ON INLET AND TOP ENTRY CARTRIDGE DUAL CHECK ON OUTLET.	18 10" ROUND IRRIGATION BOX WITH LID.
4 2" 200 psi POLYETHYLENE METER LATERAL.	12 METER - INSTALLED BY HLD.	19 2"x12" GALVANIZED NIPPLE.
5 10 GAUGE SOLID COPPER TRACER WIRE. CONNECT TO TRACE WIRE ON MAIN USING 3M TYPE DBR CONNECTOR.	13 BROOKS #67 OR FOGTITE #3 METER BOXES INSTALLED WITH TRAFFIC RATED LID WITH METER READING DOOR. INSTALLED PLUMB AND CENTERED ON METER SETTER.	20 2" 90° EL.
6 2" BALL CURB VALVE; FORD OR EQUAL.	14 SAND - INSTALL AFTER INSPECTION BY HLD.	21 2" GALVANIZED PIPE.
7 10" PVC VALVE STACK (10" SDR-35 WHITE) WITH 10" ROUND IRR. BOX AND LID. FINAL SET TO FINISH GRADE. INSTALLED PLUMB.	15 2"x24" GALVANIZED MIP NIPPLE.	22 2" GALVANIZED NIPPLE.
8 2"x18" GALVANIZED MIP NIPPLE.		23 DOUBLE CHECK VALVE INSTALLED BY CUSTOMER.
		24 IRRIGATION BOXES OR METER BOXES PROVIDING SUFFICIENT CLEARANCE FOR TESTING AND SERVICING.



**DETAIL "A" NOTES:**

- 2" FORD OR EQUAL BALL CURB VALVE.
- 2"x3/4" GALVANIZED TEE.
- 3/4" CLOSE NIPPLE.
- 3/4" 90° BEND.
- 3/4" BALL CURB VALVE.



**HAYDEN LAKE  
IRRIGATION DISTRICT**

**IRRIGATION UNDERGROUND METER SET**

**NOTES:**  
ALL MATERIALS MUST BE NSF 61 CERTIFIED AND LEAD FREE OR LOW LEAD WHERE APPLICABLE.  
ALL COMMERCIAL/LIGHT INDUSTRIAL SERVICE CONNECTIONS MUST BE PROTECTED BY A REDUCED PRESSURE ZONE PRINCIPLE BACK FLOW ASSEMBLY (RP) INSTALLED DOWNSTREAM OF THE METER SETTER. NO UNPROTECTED CONNECTIONS WILL BE MADE BETWEEN THE METER AND RP.

SCALE: NONE	DATE: APRIL 2009
DWG: IRR_METER_SET(4-2009).dwg	APPROVED: AM