

ITEM NO. AND DESCRIPTION

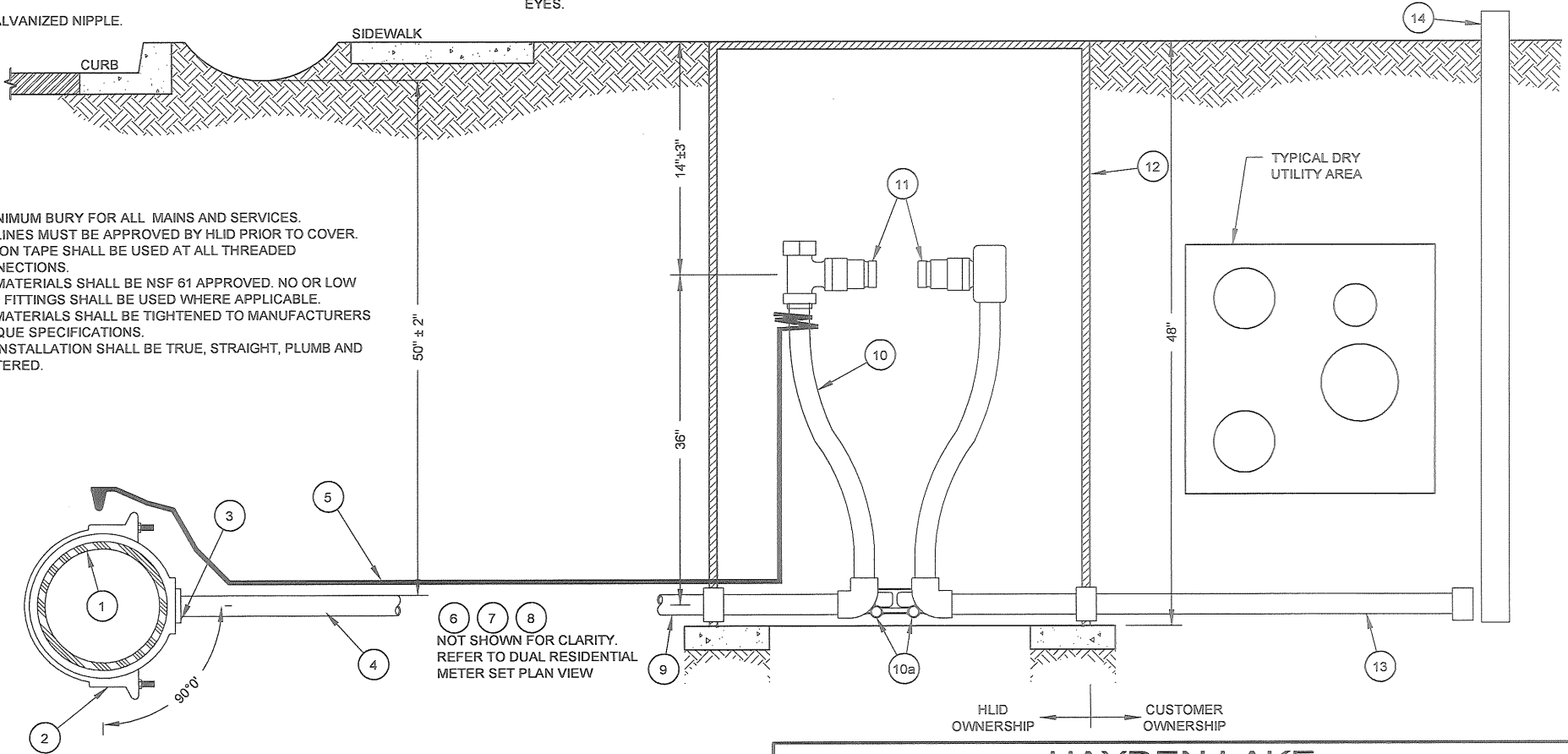
- 1 WATER MAIN PER HLID APPROVED PLANS AND IDAHO STANDARDS FOR PUBLIC WORKS CONSTRUCTION.
- 2 "SIZE OF MAIN" X 1.5" OR 2" DOUBLE STRAP SADDLE.
- 3 LINE TAP:
 - a. DRY TAP: 1.5" X 1.5" OR 2" MIP X 2" POLYETHYLENE PACK JOINT FITTING WITH INTERIOR STIFFENER.
 - b. WET TAP: 1.5" X 1.5" OR 2" MIP CORPORATION STOP X 2" POLYETHYLENE PACK JOINT FITTING WITH INTERIOR STIFFENER.
- 4 1.5" OR 2" 200 PSI POLYETHYLENE METER LATERAL.
- 5 10 GAUGE SOLID COPPER TRACER WIRE. SPLICE TO TRACE WIRE ON MAIN USING 3M TYPE DBR OR DRYCONN DBSR SPLICE KIT.
- 6 1" X 1" X 1.5" OR 2" GALVANIZED TEE WITH CLOSE NIPPLE CONNECTED TO 1.5" OR 2" POLYETHYLENE PACK JOINT FITTING WITH INTERIOR STIFFENER.
- 7 1" X 18" GALVANIZED NIPPLE.

- 8 1" BALL CURB STOP: A.Y. MCDONALD, FORD OR HLID APPROVED EQUIVALENT.
 - a. CURB BOX TO BE 4" SDR 35 PVC STACK: INSTALLED PLUMB AND EXTENDED ABOVE GROUND WITH CAP. AFTER FINAL INSPECTION AND PRESSURE TEST FINISH CURB STACK TO 4" BELOW SIDEWALK GRADE. CAP WITH 4" PVC SLIP CAP DO NOT GLUE.
 - b. IF VALVE STACK IS TO BE PLACED IN TRAFFIC AREA THEN ROAD RATED MATERIALS MUST BE USED AS SPECIFIED: TYLER FOUNDRY TOP SECTION AND LID. SET TOP LEVEL TO 1/2" BELOW FINISH GRADE. TRAFFIC AREAS WILL BE DETERMINED BY HLID.
- 9 1" X 12" GALVANIZED NIPPLE WITH 90° ELBOW. INCLUDE 1" X 3" NIPPLE TO CONNECT TO METER SETTER.
- 10 3/8" X 1" A.Y. MCDONALD, FORD OR HLID APPROVED EQUIVALENT METER SETTER. NO OR LOW LEAD METER SETTER WITH TOP ENTRY DUAL CHECK VALVE.
 - a. BRACE USING (2) 3' X 3/4" GALVANIZED PIPE BRACES THROUGH BRACING EYES.

- 11 1" X 3/4" A.Y. MCDONALD, FORD OR HLID APPROVED EQUIVALENT NO OR LOW LEAD METER ADAPTORS. METER INSTALLED BY HLID.
- 12 MID STATES PLASTIC 13" X 24" X 4" DEPTH METER BOX. CONNECT METER BOX SECTIONS USING SHEET METAL SIDING SCREWS, MINIMUM 2 PER SIDE INSTALL FROM INSIDE BOX. SET BOX TOP TO SIDEWALK GRADE. COMPACT AREA UNDER BOX OR USE 1" MINIMUM MASONRY BLOCK AT EACH CORNER. BOX SHALL BE PLUMB AND CENTERED TO METER SETTER.
 - a. IF METER BOX IS TO BE PLACED IN A TRAFFIC AREA THEN ROAD RATED MATERIALS MUST BE USED AS SPECIFIED: BROOKS 38MB CONCRETE BOX SIZED FOR 4" BURY WITH BROOKS 38-TFR STEEL COVER (FLUSH). TRAFFIC AREAS WILL BE DETERMINED BY HLID.
- 13 CUSTOMER SERVICE LATERAL. INSTALL PER PLUMBING CODE. STUB PAST DRY UTILITY EASEMENT. TERMINATE WITH 1" PVC THREADED CAP INSTALLED HAND TIGHT.
- 14 2" X 4" MARKER PAINTED BLUE. EXTEND 12" ABOVE SIDEWALK GRADE.

NOTES

- 1. 5' MINIMUM BURY FOR ALL MAINS AND SERVICES.
- 2. ALL LINES MUST BE APPROVED BY HLID PRIOR TO COVER.
- 3. TEFLON TAPE SHALL BE USED AT ALL THREADED CONNECTIONS.
- 4. ALL MATERIALS SHALL BE NSF 61 APPROVED. NO OR LOW LEAD FITTINGS SHALL BE USED WHERE APPLICABLE.
- 5. ALL MATERIALS SHALL BE TIGHTENED TO MANUFACTURERS TORQUE SPECIFICATIONS.
- 6. ALL INSTALLATION SHALL BE TRUE, STRAIGHT, PLUMB AND CENTERED.



6 7 8
NOT SHOWN FOR CLARITY.
REFER TO DUAL RESIDENTIAL
METER SET PLAN VIEW

HLID OWNERSHIP ← | → CUSTOMER OWNERSHIP

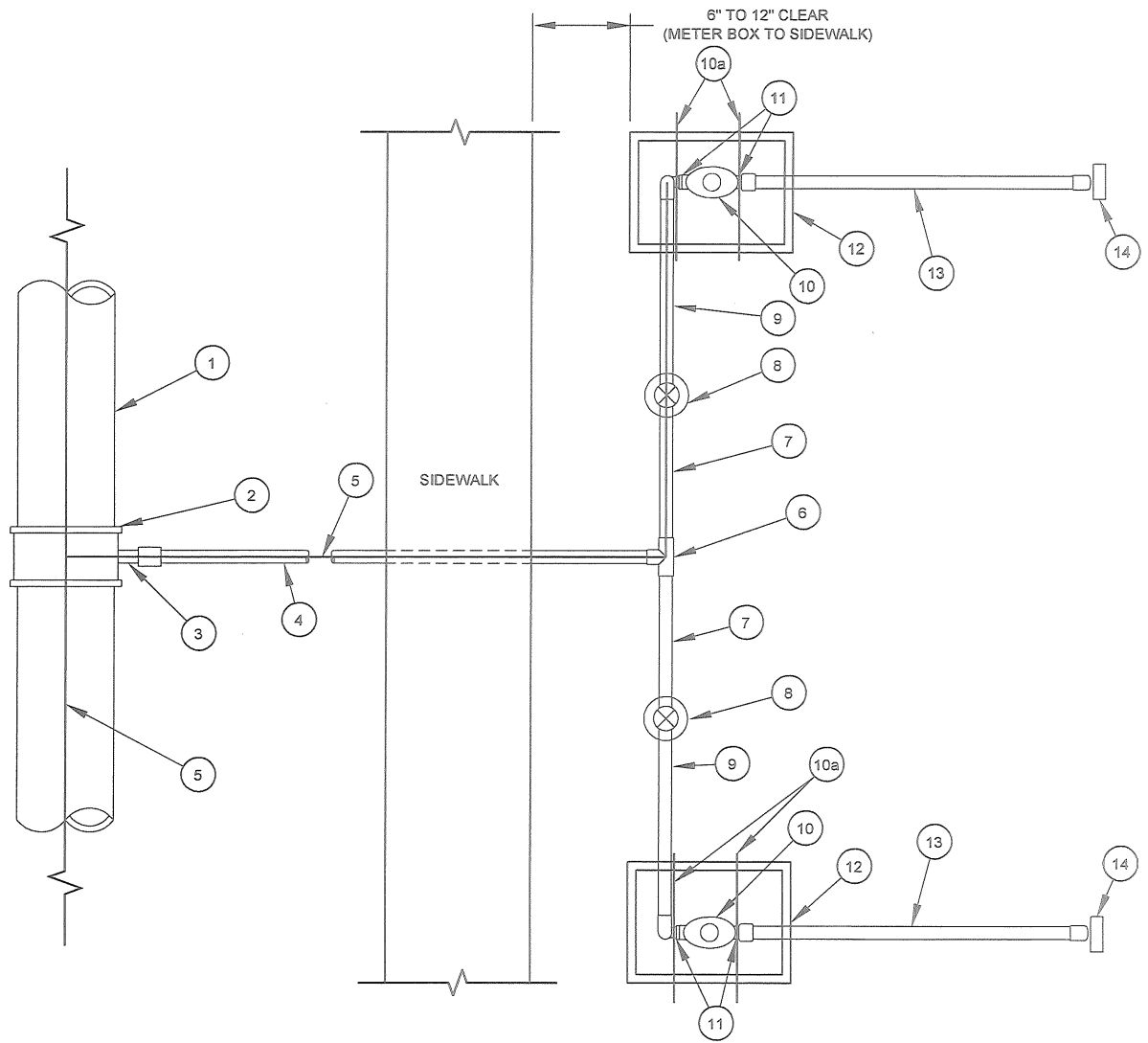
HAYDEN LAKE IRRIGATION DISTRICT	
DUAL RESIDENTIAL METER SET PROFILE VIEW	
SCALE: NONE	DATE: October, 2010
DWG: DUAL_SET_PROFILE_VIEW(10-2010).dwg	APPROVED: AM

NOTES

1. 5' MINIMUM BURY FOR ALL MAINS AND SERVICES.
2. ALL LINES MUST BE APPROVED BY HLID PRIOR TO COVER.
3. TEFLON TAPE SHALL BE USED AT ALL THREADED CONNECTIONS.
4. ALL MATERIALS SHALL BE NSF 61 APPROVED. NO OR LOW LEAD FITTINGS SHALL BE USED WHERE APPLICABLE.
5. ALL MATERIALS SHALL BE TIGHTENED TO MANUFACTURERS TORQUE SPECIFICATIONS.
6. ALL INSTALLATION SHALL BE TRUE, STRAIGHT, PLUMB AND CENTERED.

ITEM NO. AND DESCRIPTION

- 1 WATER MAIN PER HLID APPROVED PLANS AND IDAHO STANDARDS FOR PUBLIC WORKS CONSTRUCTION.
- 2 "SIZE OF MAIN" X 1.5" OR 2" DOUBLE STRAP SADDLE.
- 3 LINE TAP:
 - a. DRY TAP: 1.5" X 1.5" OR 2" MIP X 2" POLYETHYLENE PACK JOINT FITTING WITH INTERIOR STIFFENER.
 - b. WET TAP: 1.5" X 1.5" OR 2" MIP CORPORATION STOP X 2" POLYETHYLENE PACK JOINT FITTING WITH INTERIOR STIFFENER.
- 4 1.5" OR 2" 200 PSI POLYETHYLENE METER LATERAL.
- 5 10 GAUGE SOLID COPPER TRACER WIRE. SPLICE TO TRACE WIRE ON MAIN USING 3M TYPE DBR OR DRYCONN DBSR SPLICE KIT. RUN TRACE WIRE TO NORTH OR WEST METER ONLY.
- 6 1" X 1" X 1.5" OR 2" GALVANIZED TEE WITH CLOSE NIPPLE CONNECTED TO 1.5" OR 2" POLYETHYLENE PACK JOINT FITTING WITH INTERIOR STIFFENER.
- 7 1" X 18" GALVANIZED NIPPLE.
- 8 1" BALL CURB STOP: A.Y. MCDONALD, FORD OR HLID APPROVED EQUIVALENT.
 - a. CURB BOX TO BE 4" SDR 35 PVC STACK: INSTALLED PLUMB AND EXTENDED ABOVE GROUND WITH CAP. AFTER FINAL INSPECTION AND PRESSURE TEST FINISH CURB STACK TO 4" BELOW SIDEWALK GRADE. CAP WITH 4" PVC SLIP CAP DO NOT GLUE.
 - b. IF VALVE STACK IS TO BE PLACED IN TRAFFIC AREA THEN ROAD RATED MATERIALS MUST BE USED AS SPECIFIED: TYLER FOUNDRY TOP SECTIONS AND LID. SET TOP LEVEL TO 1/2" BELOW FINISH GRADE. TRAFFIC AREAS WILL BE DETERMINED BY HLID.
- 9 1" X 12" GALVANIZED NIPPLE WITH 90° ELBOW.
- 10 36" X 1" A.Y. MCDONALD, FORD OR HLID APPROVED EQUIVALENT METER SETTER. NO OR LOW LEAD METER SETTER WITH TOP ENTRY DUAL CHECK VALVE.
 - a. BRACE USING (2) 3' X 3/4" GALVANIZED PIPE BRACES THROUGH BRACING EYES.
- 11 1" X 3/4" A.Y. MCDONALD, FORD OR HLID APPROVED EQUIVALENT NO OR LOW LEAD METER ADAPTORS. METER INSTALLED BY HLID.
- 12 MID STATES PLASTIC 13" X 24" X 4' DEPTH METER BOX. CONNECT METER BOX SECTIONS USING SHEET METAL SIDING SCREWS, MINIMUM 2 PER SIDE INSTALL FROM INSIDE BOX. SET BOX TOP TO SIDEWALK GRADE. COMPACT AREA UNDER BOX OR USE 1" MINIMUM MASONRY BLOCK AT EACH CORNER. BOX SHALL BE PLUMB AND CENTERED TO METER SETTER.
 - a. IF METER BOX IS TO BE PLACED IN A TRAFFIC AREA THEN ROAD RATED MATERIALS MUST BE USED AS SPECIFIED: BROOKS 38MB CONCRETE BOX SIZED FOR 4' BURY WITH BROOKS 38-TFR STEEL COVER (FLUSH). TRAFFIC AREAS WILL BE DETERMINED BY HLID.
- 13 CUSTOMER SERVICE LATERAL. INSTALL PER PLUMBING CODE. STUB PAST DRY UTILITY EASEMENT. TERMINATE WITH 1" PVC THREADED CAP INSTALLED HAND TIGHT.
- 14 2" X 4" MARKER PAINTED BLUE. EXTEND 12" ABOVE SIDEWALK GRADE.



**HAYDEN LAKE
IRRIGATION DISTRICT**

DUAL RESIDENTIAL METER SET PLAN VIEW

SCALE: NONE

DATE: October, 2010

DWG: DUAL_SET(10-2010).dwg

APPROVED: AM